



3-bedroom apartment with potential in Diepenbeek!

Lutselusplein 13 - 22, 3590 Diepenbeek

3-bedroom apartment with potential in Diepenbeek!

This spacious and bright 106m² apartment is located on the second floor. The apartment has a favorable EPC label (B), features 3 bedrooms and a south facing terrace. Nearby you will find several amenities, including a supermarket and a bakery for your daily groceries. Schools and childcare are also nearby. Whether you are looking for a new home or a smart investment, this apartment offers you the chance to refresh and fully personalize it to your liking! Common costs are 200 euros p/m with gas consumption! Furthermore, the VME has set up a savings plan of 184 euros p/m for a new roof with solar panels. the works are scheduled for the end of 2026.

DESCRIPTION:

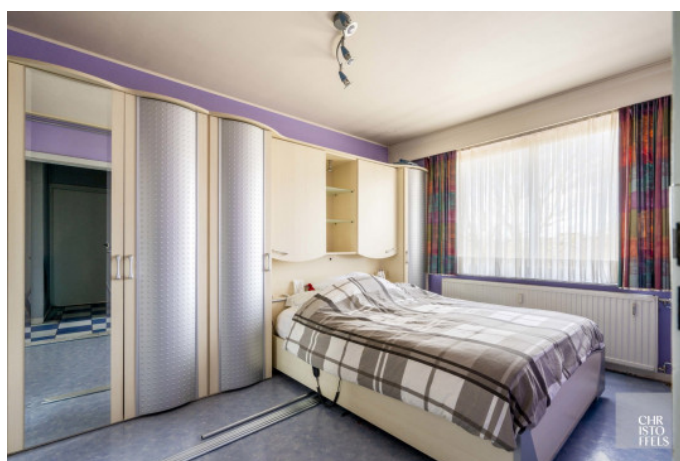
Private entrance hall with guest toilet, living room, kitchen and a terrace, storage room with laundry, three bedrooms and a bathroom.

There is private parking at the back and ample parking at the front of the residence.

FINISHING:

The kitchen with white kitchen cabinets and plastic worktop is equipped with a hob, extractor hood, dishwasher and sink.

The bathroom is equipped with shower and a single sink integrated into the bathroom cabinet.





Facts & Figures

Address Details

address Lutselusplein 13 - 22
3590 Diepenbeek

Financial information

price excl. cost € 239.000
cadastral income € 862
communal costs € 0

Technical information

year of construction	1977	bedrooms	3
habitable living space	106 m ²	bathrooms	1
patio orientation	south	parking spaces	1
		epc	152 kwh/m ²

extra lift
g-score d
p-score d
o-level class d (medium probability under current climate)
worg no

