



Yield property, particularly large house of 761m² with 10 bedrooms, beautifully and quietly located on 1,800m² with its own car park!

Zetellaan 51, 3630 Maasmechelen

Yield property, particularly large house of 761m² with 10 bedrooms, beautifully and quietly located on 1,800m² with its own car park!

This yield property is located opposite the Hoge Kempen nature park. We will gladly provide you with a customised return simulation that takes into account the rental return, the capital gain and the financial leverage in function of the investment period. You can always contact us for this on +32 89 73 01 01.

LAYOUT

The ground floor comprises an entrance hall with stairs to the upper floor. The floor is finished with parquet and ceramic tiles. The entrance hall is equipped with a guest toilet. Furthermore, you will find the living room, equipped with a fireplace, as well as a kitchen with pantry and storage room. In addition, on the ground floor there are four bedrooms, one bathroom and two separate toilets.

The first floor accommodates six bedrooms, two of which are equipped with a private shower and toilet. In addition, on this floor there is a bathroom, a kitchen and a patio, currently used as a sitting room.

The attic has a mosaic parquet floor and consists of three rooms, located back to back and provided with natural light. There are also two more attic storage rooms on this floor.

The house has a full basement and is equipped with two central heating rooms, a pantry, a hobby room and a laundry room.

The garden is south-facing and features a garage house where the gates have been replaced by sliding windows.

FINISH

The ground-floor kitchen has a standard finish and is fitted with a ceramic hob, an extractor fan and a double sink with shy.

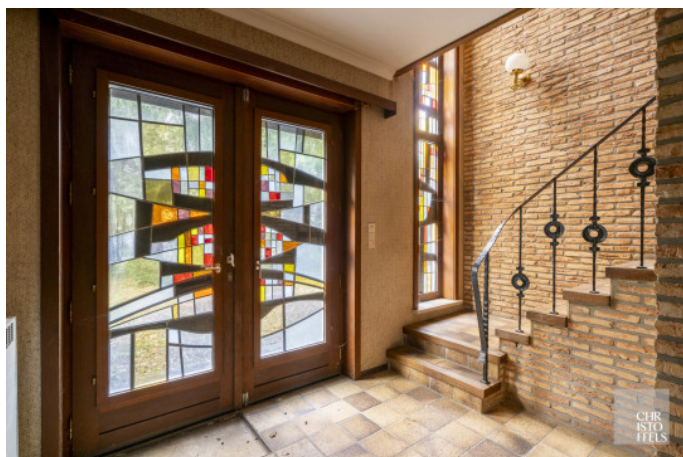
The upstairs kitchen is fitted with a ceramic hob, oven, dishwasher, fridge, extractor fan, microwave and sink.

Bathroom 1 is equipped with a shower, a toilet and two washbasins

Bathroom 2 is equipped with a shower, a bathtub, a toilet, a bidet and two washbasins

Shower rooms 1 and 2 are equipped with a shower, a toilet and a washbasin







Facts & Figures

Address Details

address Zetellaan 51
 3630 Maasmechelen

Financial information

price excl. cost € 895.000
registration fees apply yes
cadastral income € 2.793

Technical information

year of construction	1976	bedrooms	10
plot size	1.800 m ²	epc	239 kwh/m ²
habitable living space	761 m ²		

extra fire detection, garden shed, cellar
g-score a
p-score a
o-level not located in flood area