



Spacious character house on a pleasant plot

Kastanjestraat 84, 3530 Houthalen-Helchteren

Spacious character house on a pleasant plot

Quiet and centrally located open development. This home enjoys a logical layout combined with mature spaces. Other features include a spacious living and dining room, open plan living kitchen including direct access to the 4-season terrace, a multipurpose living area, 2 bathrooms and a landscaped garden.

Layout

Through the entrance hall with guest WC there is access to the office space, living and dining room, open plan kitchen, covered terrace and utility room including laundry. The fully landscaped outdoor area features two driveways, outdoor parking, landscaped terraces, a lawn and various mature plantings.

The first floor comprises a centrally located night hall, walk-in dressing room, bedroom 1 (master bedroom) with bathroom 1 en suite. Also located there are bedroom 2, 3, 4 and a second bathroom for maximum comfort.

The upper level is currently used as a storage attic and could be converted into quality living space.

The property has full basement and comprises a mezzanine hallway, indoor garage for several vehicles, a fitted wine bar and several storage rooms.

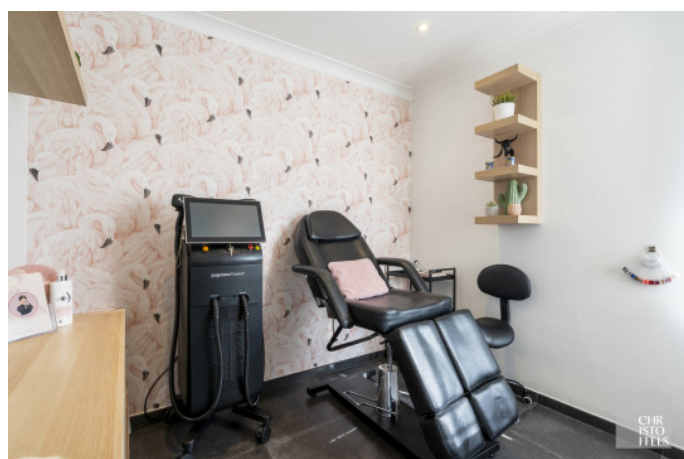
Finish

The bespoke kitchen with peninsula and breakfast area is finished in a range of low and high cabinets with composite worktops,

A-brand appliances (Smeg, Miele, etc.), 90 cm induction hob with matching island hood, dishwasher, self-cleaning oven, microwave, espresso machine incl. warming drawer, fridge, double sink and shy.

The first bathroom is fitted with a vanity unit, shower and toilet. The second bathroom is installed with a vanity unit, walk-in rain shower and a third toilet.

The house features a high level of equipment combined with sustainable techniques.





CHR
ISTO
FFELS



CHR
ISTO
FFELS

Facts & Figures

Address Details

address Kastanjestraat 84
3530 Houthalen-
Helchteren

Financial information

price excl. cost € 598.000
registration fees apply yes
cadastral income € 1.370

Technical information

year of construction	1999	bedrooms	4
year of renovation	2021	bathrooms	2
plot size	950 m ²	garages	1
habitable living space	253 m ²	parking spaces	2
patio orientation	north east	epc	241 kwh/m ²
garden orientation	north east		
extra	cellar		
g-score	a		
p-score	a		
o-level	not located in flood area		
worg	no		