



*Hoogstraat 26 - 1.2, 3690 Zutendaal*

*Residence Domus is a small-scale newly built residence of 12 apartments in the center of Zutendaal. Thanks to the proximity of stores, schools and public transport, you can enjoy optimal living conditions. The surrounding municipalities including Genk, Lanaken and Maastricht are easily accessible. The rental prices for the apartments include a parking space and storage room in the basement, spacious terraces, underfloor heating and high-quality Miele appliances in the kitchen. It concerns very energy efficient new apartments with an E-level lower than 20. There is heating via heat pumps by means of underfloor heating and there are solar panels provided (ratios to be determined). Rental price duplex apartments: €940/month. Common costs: €70/month.*

#### NDELING:

The duplex apartments all have an entrance hall, a guest toilet, an open living area with kitchen, a storage room with connections for washer and dryer, a first terrace, a staircase, a night hall, a bathroom, two bedrooms and a second terrace.

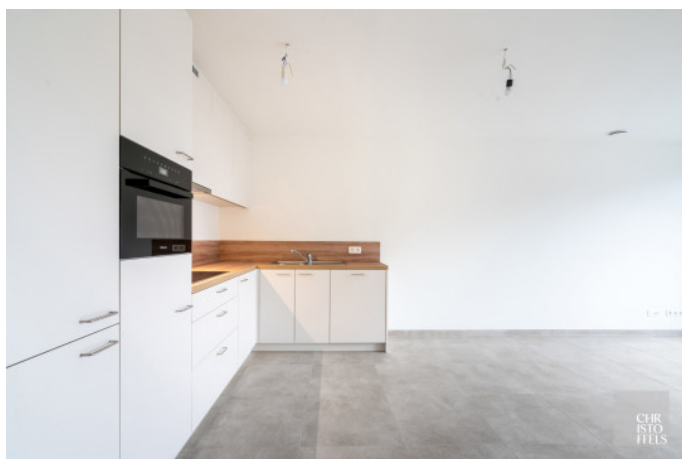
In the basement there is a private pitch and storage room for each apartment.

#### FINISHING:

The kitchens in the duplex apartments are equipped with quality Miele appliances including combination oven, dishwasher, built-in cooker hood, induction hob, a refrigerator and freezer.

The bathrooms in the duplex apartments feature a double sink integrated into the bathroom cabinet, a toilet and a shower.

The apartments are heated via heat pumps using underfloor heating.







# Facts & Figures

## Address Details

**address**                      Hoogstraat 26 - 1.2  
   3690 Zutendaal

## Financial information

**communal costs**                      € 70

---

## Technical information

<b>year of construction</b>	2023	<b>bedrooms</b>	2
<b>habitable living space</b>	92 m <sup>2</sup>	<b>bathrooms</b>	1
		<b>parking spaces</b>	1

**extra**                      lift, intercom, fire detection, cellar

**g-score**                      a

**p-score**                      a

**o-level**                      not located in flood area

